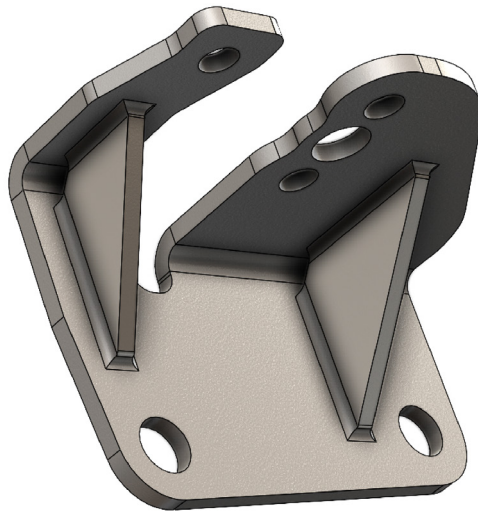




TACOMA

Bed Step Bracket INSTALLATION INSTRUCTIONS



Tools needed:

- Ratchet
- 12mm socket or wrench
- 24mm socket or wrench
- Torque Wrench

Vehicle Fitment:

- 2024+ Toyota Tacoma





1. Remove the OEM bed step from the truck and place it on a flat working surface. Swap the SXTH bed step bracket on to the step. The bolts are 12mm. When installing the SXTH bracket, torque the bolts to 10-15lb-ft.



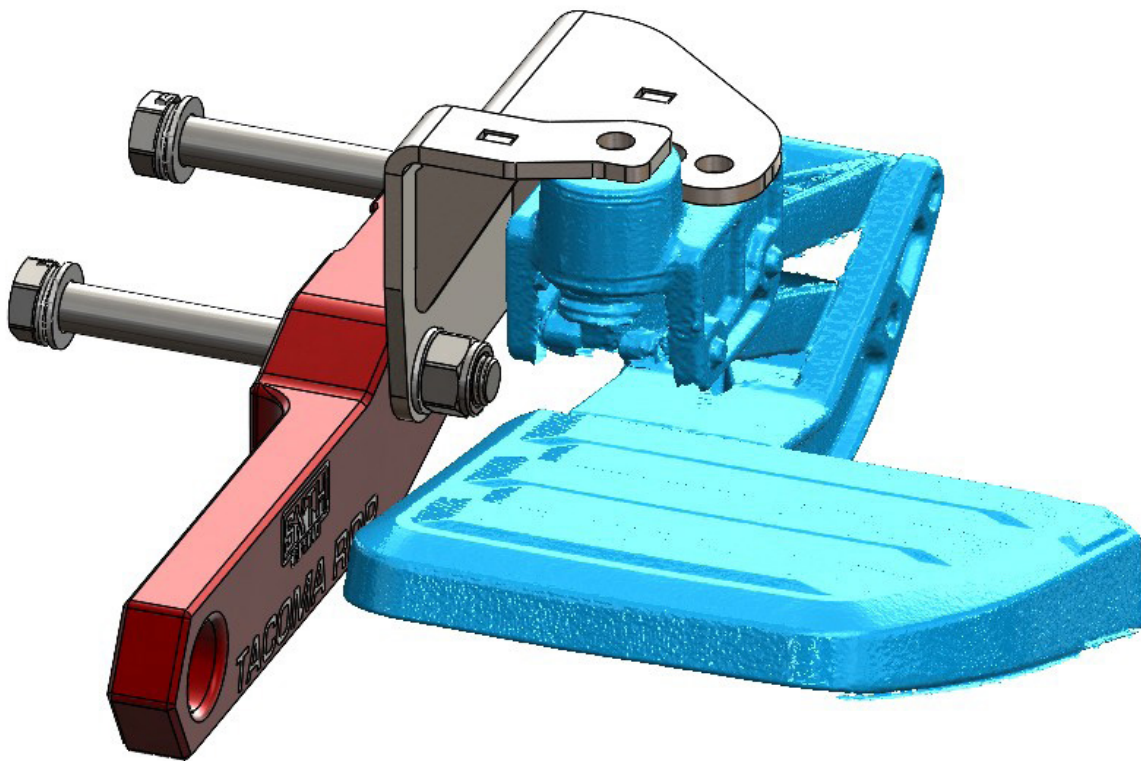


2. With your recovery point in place and the long bolts showing thru, place the step/SXTH bracket assembly on to the bolts on the outside of the recovery point. Place the washers and nuts on as shown below and torque to the recommended torque spec for your recovery point brand. Please note, if the bolt thread is flush or a thread shy of flush (without sticking out) the function of the recovery point is still maintained at suggested torque. There are enough threads to maintain clamping force for the application.





3. Here is a CAD image showing how the SXTH bracket replaces the OE bracket when mounting with recovery points.





Legal Disclaimer:

SXTH Element Engineering, LLC makes no warranties whatsoever, expressed or implied, oral or written to any purchasers, except the limited warranty described on our website. SXTH Element Engineering, LLC is hereby specifically excluded from any implied warranty of incidental, secondary, or consequential damages of any kind whatsoever. All purchasers and users of products manufactured by SXTH Element Engineering, LLC agree to hold harmless and indemnify SXTH Element Engineering, LLC from any and all claims arising from their use. Failure to receive notice of any limitations or the limitations contained in this disclaimer shall not serve to extend liability to SXTH Element Engineering, LLC for any claims arising out of use of its products.

